

## USM Haller

### Components

#### 1 Metal extension door

Available with pull handle or turning handle with or without locks.\*

W: 750 / H: 395

W: 500 / H: 395

W: 750 / H: 350

W: 500 / H: 350

W: 395 / H: 350

W: 350 / H: 350

W: 750 / H: 250

W: 500 / H: 250

For depths 350 and 500

Available also as acoustic extension door, lined with sound-absorbing fabric.

W: 750 / H: 350

W: 500 / H: 350

W: 750 / H: 250

#### 2 Drawer

Available with pull handle or turning handle with or without locks.\* Closed or open front.

B: 750 / H: 350

B: 500 / H: 350

B: 750 / H: 250

B: 500 / H: 250

B: 750 / H: 175

B: 500 / H: 175

For depths 350 and 500

Available also as acoustic drawer, lined with sound-absorbing fabric.

B: 750 / H: 350

B: 500 / H: 350

B: 750 / H: 250

\* Locking handle also available as an electronic closure (countries of availability upon request).



1



2





## USM Haller

### Components

#### 1 Metal divider shelf

Height adjustable.

W: 750 / D: 500

W: 750 / D: 350

W: 750 / D: 250

W: 500 / D: 500

W: 500 / D: 350

#### 2 Glass divider shelf

Height adjustable. Mounts to metal side panels only. Details see page 46.

#### 3 Metal angled shelf

Lifts up for additional storage space behind.

W: 750 / H: 350

W: 500 / H: 350

#### 4 Metal extension shelf

Pulls out with telescopic mechanism.

W: 750 / D: 500

W: 750 / D: 350

W: 500 / D: 500

W: 500 / D: 350

W: 395 / D: 500

W: 395 / D: 350

#### 5 Extension filing set

Pulls out with telescopic mechanism. Available with or without front panels. Hanging file inserts available in three heights.

W: 750 / D: 500

W: 395 / D: 500

#### 6 Bookshelf panel

W: 750 / D: 350

W: 750 / D: 250

#### 7 Small drawer

Available with or without lock.\*

W: 395 / D: 500 / H: min. 100

#### 8 Drawer A6

Available with or without lock.\*

W: 395 / D: 500 / H: min. 175

#### 9 Drawer A5

Available with or without lock.\*

W: 395 / D: 500 / H: min. 250

#### 10 Drawer A4

Available with or without lock.\*

W: 395 / D: 500 / H: min. 350

\* Locking handle also available as an electronic closure (countries of availability upon request).



1



2



3



4



5



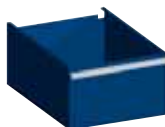
6



7



8



9



10

