

new



On the Ball There is always something that looks out of place on a table, takes up too much space or is simply offensive to the eye. Cables, in particular, can truly get in the way of order and aesthetics. To put an end to unsightly cable spaghetti, the black aluminum cable channel (1) was recently designed for the USM Haller and USM Kitos tables, replacing the existing cable channels. The larger size now makes it possible to completely and invisibly enclose a multi-plug unit with inserted plugs and to close the cover, which can be opened on both sides, to make it flush with the table surface. Upon request, a cutout for the multi-plug (2) unit can also be integrated into the cable channel cover so that the outlets remain available for outlets that have been specifically configured to suit customer requirements (e.g. more than four outlets, country-specific data flow and power supply). Another new option available for the USM Kitos table is a the cable basket (3). An extension element ensures that, in addition to the cables, the multi-plug outlet can be kept out of sight on the cable rack underneath the tabletop. An attachment set for the USM multi-plug was created to ensure a flexible, mobile supply of electricity to temporary workstations. It is screwed manually onto any tabletop, and the multi-plug unit – which is magnetic – is simply placed on top.

USM Haller Table
USM Kitos

New wire management

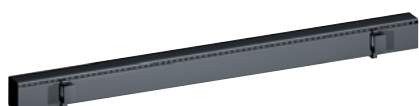
USM Haller cable duct

L: 2000
L: 1750
L: 1500
L: 1250
L: 1000
L: 750

USM Kitos cable duct

L: 1750
L: 1500
L: 1000
L: 900
L: 750

1



2



3

