

USM Haller Table

Accessories

1 Universal support

Mounts to the table frame to hold various accessories.

2 Flat screen swing arm

The flat screen panel attaches to a universal plate (VESA norm) on the swing arm. Height-adjustable, rotating and pivoting swing arm.

Options

Basic (2a) – pivoting and tilting with a fixed height adjustment
Plus (2b) – pivoting and tilting with a continuous height adjustment

3 CPU holder

Mounts to the table frame. Height-adjustable and rotating. An adjustable strap ensures a secure fit for most standard CPUs.

4 Link chain

Holds and directs cables to the power source. Flexible and adjustable to various lengths.

5 Cable guide

Clips to the table leg. Holds and directs cables to the power source.

6 Pivoting pen holder

Mounts to the right or left underside of the table frame. Pivots discreetly below the work surface.

7 Power strip

Provides power and data. Available with a 4 m cable or a switch. Mounts to the table frame, attaches to the storage system or placed in a cable duct.

8 Cable wire basket

Mounts to the underside of the work surface.

9 Cable duct

Holds power strips and cables; the cover can be recessed with two top openings. Table depth increases to the EU norm over 800 mm.

Available in the following table lengths

L: 2000

L: 1750

L: 1500

L: 1250

L: 1000

L: 750



1



2a



2b



3



4



5



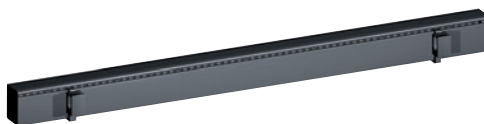
6



7



8



9

